



**W
A
T
F
O
R
D
F.C.**

the
Hornet
express

OFFICIAL PROGRAMME 1/- 5p

FOOTBALL LEAGUE DIVISION TWO

Wednesday, 28th April, 1971

SWINDON TOWN

Kick-off 7.30 p.m.



BE LIKE WATFORD F.C. . . .

Get your Sports Equipment from the Specialists . . .

PETER SPIVEY LTD.

83A The Parade, Watford. Tel. 26550

and at

71 Marlowes, Hemel Hempstead. Tel. 56760

E. E. BEAUMONT & SON

(Established 1763)

Motor Body Repair Specialists

27 HIGH STREET, PINNER, MIDDLESEX

Telephone: 01-866 0730

REPAIRS LUBRICATION PETROL ACCESSORIES

*For quick, economical repairs and personal service
call and see Eric at*

VICARAGE ROAD SERVICE STATION

Adjacent to the Ground

WATFORD 31968

BRIDGEWATER FOR GLASS
all types of glass cut while you wait

SAFETY GLASS·TABLE TOPS·CURVED SCREENS·LEADED LIGHTS

MIRRORS·MIRRORS RE-SILVERED

46 VICARAGE ROAD WATFORD Tel: 36162/20339/43096

Tel. WATFORD 25107

**CROXLEY BUILDING
SUPPLIES LTD.**

Builders Merchants

MET. & L.N.E. STATION, CROXLEY GREEN, HERTS

Bricks, Cement, Lime, Plasters, Dampcourse,
Tiles, etc. — Concrete Spurs, Coal Bunkers,
Paving Slabs — Roofing Felt, Snowcem, etc.

SUPPLIED IN ANY QUANTITY

Showrooms adjoining Met. Station
(Kitchen Units, Sanitary Ware, Paints, etc.)

RICKMANSWORTH 75887

The Second Division Scene

WATFORD ATTENDANCES DOWN

By Tony Pullein

Vicarage Road attendances this season (excluding last Saturday's game) have averaged 14,745—well down on last season's 17,149, but only 679 below this season's Second Division average of 15,424.

Our best attendance was, understandably, for the visit of local rivals Luton Town (24,456) and the lowest was 10,462 to see Carlisle.

The total number of people to watch Second Division football up to this stage was 6,632,457, the best for any Saturday being 203,176 for the Easter Saturday games which included a number of matches affecting promotion and relegation. That's the only time this division has topped the 200,000-mark all season.

Five clubs top the 20,000-figure, most surprising being Birmingham City. Though they made a fantastic late bid for promotion—alas, in vain—they had been concerned in the relegation area early on. Still they have produced an average of 24,900.

Birmingham attracted the Second Division's highest crowd of the season to see them play Cardiff—49,025. In spite of their early troubles the Blue's smallest attendance was 13,930. For all this, Birmingham's average is still more than 2,000 lower than their local rivals Aston Villa who are playing in the Third Division!

The smallest Second Division crowd of the season was 5,266 at Millwall for the visit of Sheffield United in a re-arranged game. The two sides had met two days earlier, before 8,002 fans, but that game was abandoned after 25 minutes because of a water-logged pitch.

Appropriately, the two relegated clubs lie also bottom in the attendance chart though Carlisle United, who still had a slight chance of winning promotion, were way down at 17th.

We lie 11th, the position in which we shall finish unless Bristol City or Norwich manage to overhaul us:

	Aggregate	Average
1. Leicester City	514,279	25,714
2. Birmingham City	498,007	24,900
3. Sheffield United	448,538	23,607
4. Cardiff City	432,008	21,600
5. Hull City	395,164	20,798
6. Middlesbrough	332,775	18,488
7. Luton Town	344,465	18,130
8. Sunderland	345,482	16,452
9. Sheffield Wednesday	327,354	16,367
10. Swindon Town	320,425	16,021
11. WATFORD	280,323	14,745
12. Bristol City	268,518	14,133
13. Portsmouth	270,109	13,505
14. Queen's Park Rangers	254,016	13,369
15. Norwich City	262,986	13,149
16. Oxford United	210,601	11,084
17. Carlisle United	214,419	10,721
18. Charlton	182,813	10,156
19. Millwall	195,350	9,767
20. Orient	177,212	9,327
21. Bolton	169,780	8,489
22. Blackburn	162,741	8,137

WATFORD ASSOCIATION FOOTBALL CLUB LIMITED

Founded 1891

Registered Offices: VICARAGE ROAD GROUND, WATFORD, WD1 8ER. Telephone Watford 21759

Directors:

J. BONSER (Chairman) S. A. LEPARD (Vice-Chairman)
D. N. BROAD J. HARROWELL C. G. LAYLEY

President: THE WORSHIPFUL THE MAYOR
(Councillor R. Jackson)

Vice-Presidents:

E. C. AMEY, D. ATKINS, T. D. BATCHELOR, E. E. BEAUMONT, C. R. BRINDEN, M. D. BROAD,
G. CARSONS, T. CUFF, S. J. CLARK, R. J. H. CRAMPTON, J. CULL, J. CULLITON, C. DENNY,
E. EDMONDS, H. GADD, F. GEARY, F. G. GIBBS, L. GOODALL, E. ERIC HUGHES, H. HUTCHINSON,
Dr. A. S. HUNTER, F. JONES, A. S. JOLIFFE, G. M. KEATES, D. F. LINDSEY, J. G. MASTERTON, J. T.
MASTERTON, J. D. MORGAN, H. MUIR-STRATFORD, P. G. WELFAIR, F. WITHEY, W. J. OLD,
R. J. OLD, D. SUMMERS, D. SHAW.

Manager: K. FURPHY Secretary: R. E. ROLLITT

Trainer: G. AITKEN Physiotherapist: P. MOLLOY

SERIAL No. 24

Voice of Watford

TONIGHT we play our final home League match of the 1970-1 season, against Swindon Town, and we extend a warm welcome to their officials, players and supporters.

With both sides already assured of a place in Division 2 for next season, we hope that we shall see a game full of attacking football and perhaps plenty of goals. It may be that Dave Mackay will be here tonight to watch his new colleagues and we would like to wish him well in the future.

Whatever the outcome of the match played last night between Sheffield United and Cardiff, it looks like next Saturday's match at Bramall Lane will have a vital bearing on the positions at the top of the table. Ken Furphy is planning the match as though it were a Cup Final, and on these occasions there is no doubt that he is in his element. Having recently taken a point from Leicester and two from Cardiff, we must obviously be causing concern at Bramall Lane. We hope as many supporters as possible will travel, and in this connection, Sid Walsham is arranging to charter a coach or a train to Sheffield. Anyone interested should contact him in the Social Club. Thanks have already been expressed to the supporters for their excellent support during the season, particularly on the away trips, and we hope to say farewell to 1970-1 with a good result at Bramall Lane.

On the whole, our home displays have not been good and according to reports from various sources, this is something not only applicable to Watford. Even clubs at the top of the table, like Leicester, have said they prefer playing away from home. All sorts of reasons are put forward, but so far no one has come up with a complete answer.

Naturally, at a period such as this, the thoughts of everyone turn to possible new signings and certainly Ken Furphy will do his best to bring new blood to the side although, as we have said before, with transfer fees continuing to rise his job will be a difficult one, with limited finance available.

In the course of the next week or so, existing season ticket holders will receive a renewal form for 1971-2, and if every season ticket holder will do his best to introduce one new season ticket holder next season it would be an enormous help to the club. An additional form will be sent out to each ticket holder and we would earnestly appeal that this be passed on to a friend. Elsewhere in the programme appears a form which can be sent to the Secretary asking for details of season tickets for 1971-2. If anyone is interested, please complete the form without delay.

It been our practice for some time now to issue season complimentary ticket books to old age pensioners and we shall be doing so again for next season. Applications for these tickets should be made to the Secretary not later than June 1st, 1971. We like to be as fair as possible with the allocation of tickets and if you have already been fortunate enough to have had one in the last few years, please do not apply for the coming season.

Don't forget the Wednesday evening five-a-side at Wembley Empire Pool on May 5. We understand that we have a bye in the first round and meet Fulham in the second.

With regard to the allocation of ground tickets for the England v Scotland match on May 22, we had a terrific response and those successful in the ballot will be notified within the next few days. In view of the large number of requests received, we regret that only those who were successful will be notified, and if you do not receive a reply this will indicate, unfortunately, that you were unlucky.

The staging of a match at Vicarage Road or indeed any football club could not take place without the assistance of a great number of people. First, we have the match day staff, turnstile men, stewards and programme sellers. Often taken for granted, and sometimes abused, they do a wonderful service for the Club which is very much appreciated. Sincere thanks are also due to our local policemen (including the specials) and the fact that difficult situations are few and far between is entirely due to the thoughtful preparations that are made weeks in advance. Generally speaking, the members of the St. John Ambulance Brigade are not called upon to any great extent, but nevertheless their services, which are entirely voluntary, are greatly appreciated. A word of thanks to our groundsman, Les Simmons, for his excellent work on the pitch. This has never been in a better condition and whilst he would be the first to admit that the weather has been in his favour, nevertheless, after something like 40 matches there is still a considerable amount of grass on the playing area.

EARN £££'s

by selling our goods to your workmates, etc.

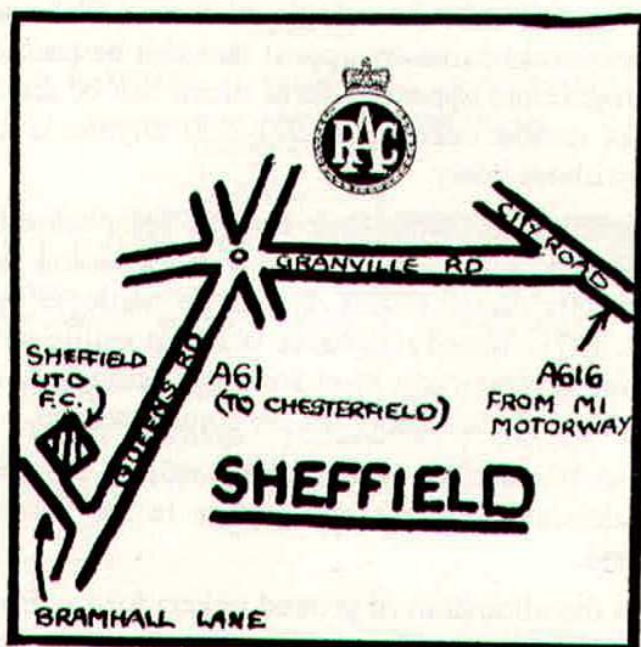
WATFORD'S NEWEST CASH 'N' CARRY

Lighters, Radios, Watches, Toys, Toiletries, Clothing, etc., etc.

M. & R. BOWMAN, 30 Aldenham Road, Watford. Tel. 23472

200yds. from Bushey & Oxhey Station

Away Travel from Watford



Join M1 as signed "Birmingham M1." Todington Service Area 22 miles. Newport Pagnell Service Area 37 miles. Watford Gap Service Area 61 miles. Leicester Forest Service Area 84 miles. Trowell Service Area 110 miles. Intersection A616 135 miles. Follow signs "Sheffield A616." Intake 142 miles. Cross "Sheffield Ring Road," SHEFFIELD 145 miles. (See Plan).

see today's
EVENING

echo

for full details of
'Cross the Ball'



Big Cash prizes in a local competition

IT'S A WINNER!

F. W. WITHEY

LIMITED

1a Strangeways, Watford

BUILDERS AND DECORATORS

Yard and Works:

Copsewood Road, Watford



ALTERATIONS A SPECIALITY



Estimates Free

Tel. 25781

For quick, efficient Service
on your way to and from the
match today

DAVIES

CAVENHAM FOODS LTD.

91-93 Vicarage Road

Watford

Telephone **WATFORD 31271**

Newsagent — Tobacconist —

Confectioners — Stationers

Ice Cream — Toys

NEWSAGENT TO THE CLUB

DR. MARTEN'S from 75/-

FELL BOOTS from 20/-

Latest London Fashions — Loofers and Wingtips from 95/-

All Tuf and Gluv shoes reduced

TOP FOOTWEAR FOR MEN

147 HIGH STREET, WATFORD

and 18 LONDON ROAD, ST. ALBANS

Space to let—

Apply

Club Secretary

TELEPHONE WATFORD 22648

E. N. MOLE & CO. LTD.

Plumbers and Heating Engineers

Decorators and Paperhangers

3 TOLPITS LANE, WATFORD

Repairs of all kinds — Estimates free

PLAY SAFE—BUY THAT BIKE FROM THE PEOPLE WHO KNOW THE GAME

THIRTEENS CYCLE DEPOT LTD.

73 CHALK HILL, OXHEY, WATFORD, HERTS

Telephone Watford 34221

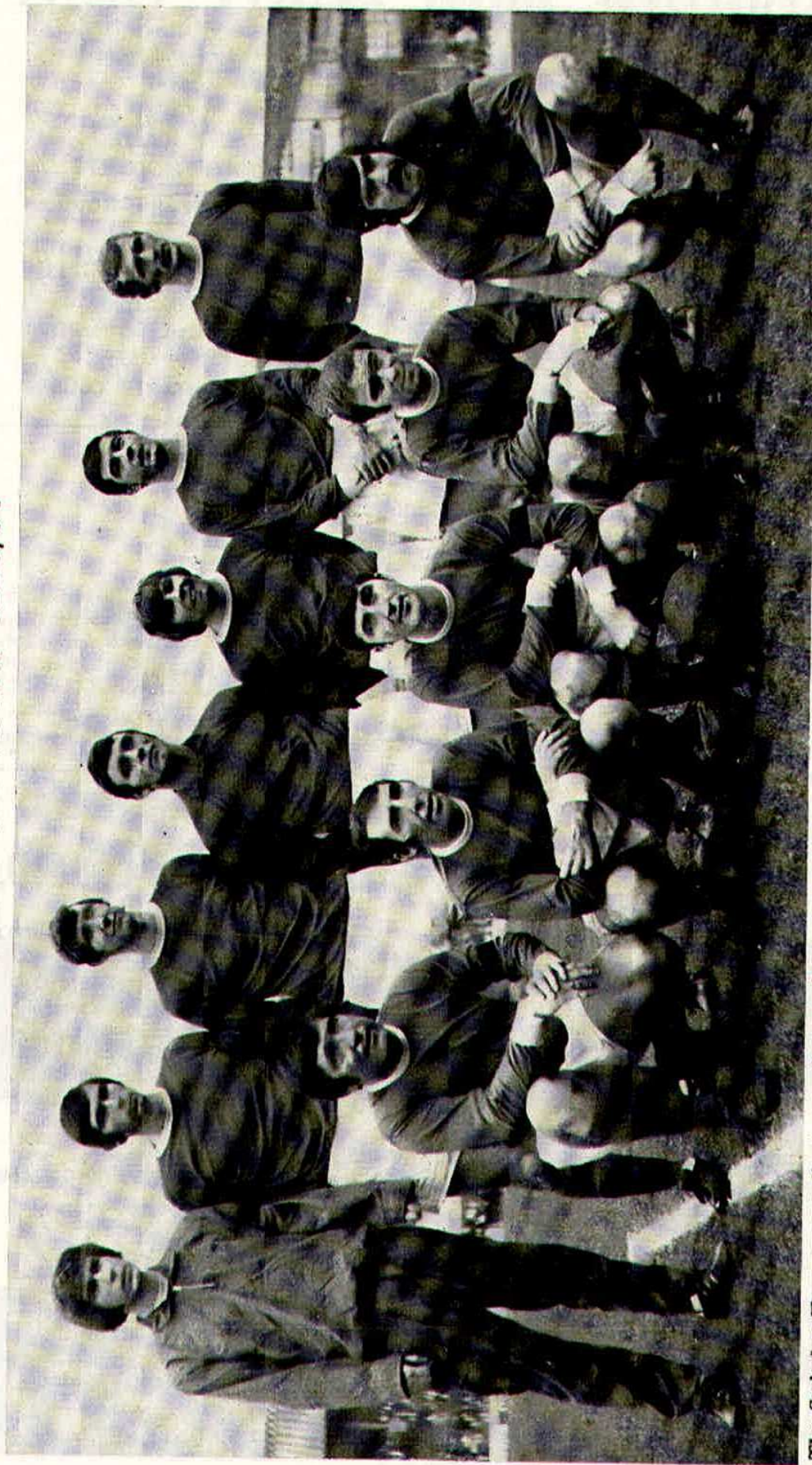
THE BICYCLE PEOPLE WITH ALL THE CURRENT MAKES OF BIKES

RALEIGH GROUP : HOLDSWORTH AND CLAUD BUTLER : DAWES : GILLOTT : VIKING
FALCON GNATS : AND FOR JUNIOR—DAWES GNAT AND PAVEMASTER RANGE

All Accessories : Tubs (all weights)

OFFICIAL C.T.C. REPAIRERS : Active member National Association of Cycle Traders

SWINDON TOWN 1970/71



The Swindon Town group. Back row (left to right): Chris Porter, Ron Potter, Rod Thomas, Peter Downsbrough, Joe Butler, Stan Harland, John Trollope. Front row (left to right): John Smith, Tony Gough, Arthur Horsfield, Peter Noble, Don Rogers.

Welcome to our Visitors

SWINDON TOWN

Peter Downsbrough (goalkeeper). Born Halifax. Signed in August 1965 from Halifax Town where he was a product of local football. A fearless agile player who has done much to strengthen Swindon's defence.

Rod Thomas (full back). Born Glyncorrwg. A former youth player with the club. He was signed from Gloucester City in July 1964. Has gained Welsh Under-23 caps and full Welsh caps.

Joe Butler (full back). Born Newcastle. Joined Swindon from Newcastle United in August 1965 where he graduated to the senior ranks through the club's junior team. A tenacious player whose speed and ability amply make up for his lack of inches.

John Trollope (left back). Born Swindon. A local player who joined the Swindon ground staff from school. He was selected for the first team at the beginning of the 1960/61 season when he was just 16 years old and was ever present during that season. Together with his partner that year, who was also 16, they were the youngest full backs ever to appear as a pair in League football.

Roger Smart (right half or inside forward). Born Swindon. Another local player who joined the club direct from Swindon Schoolboys team. At 17 he was appearing regularly at centre forward in the Reserve team, but he excels as a deep-lying inside forward. A versatile player who is able to play at wing half.

Stan Harland (left half) and captain. Born Liverpool. Was signed from Carlisle United in July 1966. Formerly with Everton and Bradford City. He has been a regular choice at left half since making his debut at the beginning of the 1966/67 season. A forceful player who likes to go forward to back up the forwards in attack.

Frank Burrows (centre half). Born Larkhall, Scotland. Joined the club from Scunthorpe United, for whom he played three seasons. Formerly with Raith Rovers. A strong defender who has made his mark in the first team.

Don Rogers (outside right or left). Born Paulton. He was signed by Swindon when only 15 and quickly came to the fore. Gained many England Youth International caps and subsequently played in the England under-23 international team.

Peter Noble (inside forward). Born Sunderland. Joined the club from Newcastle in January 1968, for whom he played for four years. Prefers to play an attacking role.

John Smith (inside forward). Born London. Signed from Torquay United in June 1968 and previously played for Leyton Orient, West Ham United, Tottenham Hotspur and Coventry. Former England under-23 international.

Arthur Horsfield (inside forward). Born Newcastle. A close season signing from Newcastle United. Previously played for Middlesbrough, whom he joined as a Youth International. Top goal-scorer last season.

Stephen Peplow (outside right). Born Liverpool. Played for Liverpool Schoolboys, and joined Liverpool from school. Made three first team appearances last season for Liverpool and was a regular member of the team which won the Central League for two consecutive years.

Tony Gough (half back). Born Bath. Signed for Bristol Rovers from Bath City at age of 17 and subsequently returned to Bath. Signed from Bath City July 1970 to return to League Football.

HODSONS

Furnishing Fabrics

KING STREET, WATFORD



You score every time
when you get your building supplies from

PRATT (WATFORD) LTD

Head Office:—

Star House • 69/71 Clarendon Road • Watford

Tel: 26411 Telex 935571

GARSTON 74727

JAMES COMPTON

ELECTRICAL ENGINEER AND CONTRACTOR

149 MOUNT PLEASANT LANE

BRICKET WOOD

C/U Cape Universal

Building Material Manufacturers

Cape Universal Building Products Ltd.,
Exchange Road, Watford, WD1 7EQ.

A member of the Cape Asbestos Group of Companies.

Telephone WATFORD 25625

WEBB'S SPARE PARTS (Watford) LIMITED

Specialists in old cars from 1932 on

Tyres, Batteries, Battery Chargers, Heaters, etc., on Terms

Call, write or 'phone for details. General Engine and Chassis Spares

36 VICARAGE ROAD, WATFORD, HERTS

WATFORD CIVIC THEATRE TRUST LTD.

PALACE THEATRE

APRIL 27th to MAY 8th, 1971

THE PRIME OF MISS JEAN BRODIE

PLAY BY JAY PRESSON ALLEN OF THE NOVEL BY MURIEL SPARK

Evenings 7.45 p.m.

Saturday Matinee 4.45 p.m.

OFF-THE-CUFF *by Harry Hornet*

Fame is a fleeting thing.

It is a truism most peculiar to soccer. How often is the idol of today the forgotten man of tomorrow? The fierce world of commercialism has no edge on the cruel race for success on the soccer field . . . and in the administrative offices.

Among the Northern "B's" who have had much of their sting removed this season and now face a spell in lower divisions—commiserations to Blackpool, Burnley, Blackburn, among others—is that famed club Bolton Wanderers, of Burnden Park, Bolton, Lancashire.

It's Third Division stuff next season for the club that won the first-ever F.A. Cup Final at Wembley—in 1923, when those never-to-be forgotten stars, Joe Smith and David Jack, scored the goals in the 2-0 win over West Ham. That was the final when the gates were rushed, 150,000 packed the stadium, and was the cause for all-ticket finals at Wembley afterwards.

Now Bolton, known as the "Trotters," have the grim prospect of spending their first-ever season in the Third Division next term after 58 seasons in the First and 13 in the Second since elected to the League in 1888.

They have been relegated before — four times, but never spent more than two seasons in Division 2, a record they let slip when relegated in 1963-4 because they began the current season in Division 2.

But why the focus on hapless Bolton? Because, as they look up the map for trips to places as Rotherdam, Wrexham, Plymouth, Swansea, Torquay, Notts County next season, there is a player in their ranks who must be contemplating with some sadness the twisted smile of a dame they call Lady Fortune.

Remember the eruption of joy at Wembley in the summer of 1966, when tall, quiet, goal-snatching Roger Hunt was acclaimed as one of the heroes of that extra-time 4-2 win over West Germany in the World Cup Final.

Hunt scored three goals on the road to the final triumph and his own city of Liverpool welcomed him as if he had beaten the rest of the world on his own.

To shake the hand of Roger Hunt in those days was considered a royal privilege.

A Liverpool team without Hunt then was considered impossible.

The addicts of "The Kop" worshipped him and when he notched a new club goal-scoring record tears of emotion welled into the eyes of those tough lads of "The Kop" whose support is worth a goal start to Bill Shankly's team.

Then Hunt snubbed Sir Alf Ramsey by telling the national team boss that he no longer wished to be considered for the England team. The long travelling and strain was getting the Liverpool ace down, it was hinted.

Came the shock in December 1969, when the idol of Anfield Road was transferred to Bolton for £32,000.

As it turned out, Hunt's departure was the forerunner of the "dropping" of several star players who had done much to polish the Liverpool image throughout the world.

Now the handshakes from fans for Hunt in Liverpool are fewer. The new lads as Steve Heighway, Alun Evans, Ray Clemence, and others are the idols of "The Kop."

There will be others who will remember and be ever grateful for the skills and sportsmanship of Roger Hunt as he prepares for the grind of a lower division.

As I observed earlier on . . . fame is a fleeting thing.

Next Matches at Vicarage Road

Thursday, April 29th, 1971 — Kick-off 7.30 p.m.

BARNARD TROPHY

WATFORD BOYS v
ST. ALBANS BOYS

Friday, April 30th, 1971

COLCHESTER UNITED

LONDON MID-WEEK LEAGUE CUP

Kick-off 7.30 p.m.

WATFORD POOLS AND DEVELOPMENT ASSOCIATION

£750

WEEKLY IN PRIZES

DAILY LUCKY NUMBERS – 3 HIGHEST SCORES

ADDITIONAL MONTHLY GIFTS

WHY NOT JOIN OUR BAND OF AGENTS

Apply for Agency – Pools Office

GOLDEN GOAL COMPETITION:

1st prize £20 for ticket with correct time of 1st goal scored

Tickets available from the sellers, 1s. each.

All sportsmen score by shopping at

GADE HOUSE
14 HIGH ST. WATFORD

MENSWEAR TAILORING SPORTSWEAR

LCS

LONDON CO-OPERATIVE SOCIETY
WATFORD 22371

LYNWOOD JOINERY
WORKS LTD.

For JOINERY and
BUILDER'S PLANT

Office and Works:

L.M.S. Goods Yard, Croxley Green

Stockists of all standard doors

Tel. WATFORD 32152/41659

Interesting work in all departments in
pleasant surroundings at

WATFORD ELECTRIC
CO. LTD.

(Whippendell Road)

Call and see us, or telephone

WATFORD 28201



Eadie managed several scrambled clearances against our forwards at Ninian Park.
Graphic Photo

6 FULL DAYS SHOPPING EVERY WEEK

at

CLEMENTS



WATFORD

Monday	9.30 a.m. to 5.30 p.m.
Tuesday	9.30 a.m. to 5.30 p.m.
Wednesday	9.30 a.m. to 5.30 p.m.
Thursday	9.30 a.m. to 5.30 p.m.
Friday	9.30 a.m. to 8.00 p.m.
Saturday	9.00 a.m. to 6.00 p.m.

CLEMENTS, THE PARADE, WATFORD WD1 1LX

WATFORD FIXTURES 1970-71

Football League Division II

© Copyright of the Football League

Aug., 1970	Opponents	Venue	Result	Goalscorers	League Position	Attendance
Sat. 15	BLACKBURN ROVERS	HOME	W 2-1	Walley 2	—	15,589
Sat. 22	Sunderland	Away	D 3-3	Walley, Wigg, Lees	8	16,228
Sat. 29	HULL CITY	HOME	L 1-2	Woods	14	17,034
Sept.						
Tues. 1	Swindon Town	Away	D 1-1	Wigg	14	16,392
Sat. 5	Queens Park Rangers	Away	D 1-1	Wigg	14	18,656
Sat. 12	CARLISLE UNITED	HOME	D 0-0		14	10,462
Sat. 19	Oxford United	Away	L 1-2	Wigg	18	13,270
Sat. 26	SHEFFIELD UNITED	HOME	D 0-0		18	15,891
Wed. 30	NORWICH CITY	HOME	W 2-0	Wigg, Eddy	10	14,163
Oct.						
Sat. 3	Portsmouth	Away	L 0-5		17	15,712
Sat. 10	CARDIFF CITY	HOME	L 0-1		17	16,244
Sat. 17	Blackburn Rovers	Away	W 3-2	Welbourne, Wigg 2	14	7,531
Mon. 19	Millwall	Away	L 0-3		14	11,988
Sat. 24	BIRMINGHAM CITY	HOME	W 2-1	Woods, Eddy	14	14,707
Sat. 31	Middlesbrough	Away	D 2-2	Scullion 2	13	16,018
Nov.						
Sat. 7	LEICESTER CITY	HOME	L 0-1		16	17,107
Sat. 14	Bristol City	Away	L 0-3		17	11,100
Sat. 21	Orient (1)	Away	D 1-1	Wigg	17	8,979
Sat. 28	BOLTON WANDERERS	HOME	D 1-1	Walley	17	12,020
Dec.						
Sat. 5	Sheffield Wednesday	Away	L 1-2	Garbett	17	12,139
Sat. 12	LUTON TOWN (2)	HOME	L 0-1		18	24,456
Sat. 19	SUNDERLAND	HOME	D 1-1	Eddy	18	12,739
Jan., 1971						
Sat. 9	Norwich City	Away	L 1-2	Wigg	19	12,711
Sat. 16	MILLWALL	HOME	L 0-4		19	14,072
Sat. 30	Bolton Wanderers	Away	W 1-0	Welbourne	18	9,940
Feb.						
Sat. 6	SHEFFIELD WED.	HOME	W 3-0	Sinclair, Jennings 2	17	12,840
Sat. 13	Luton Town	Away	L 0-1		18	20,137
Sat. 20	ORIENT	HOME	D 0-0		18	14,336
Fri. 26	MIDDLESBROUGH	HOME	W 1-0	Wigg	16	14,112
Mar.						
Tues. 2	Charlton Athletic	Away	W 2-1	Farley, Scullion	16	10,415
Sat. 6	Birmingham City	Away	L 0-2		17	27,605
Sat. 13	BRISTOL CITY	HOME	L 0-3		18	12,288
Sat. 20	Leicester City	Away	D 1-1	Walley	18	24,817
Sat. 27	Q.P.R.	HOME	L 1-2	Wigg	18	16,625
April						
Sat. 3	Hull City	Away	L 0-1		18	17,199
Fri. 9	PORTSMOUTH	HOME	D 0-0		18	12,826
Sat. 10	CHARLTON ATHLETIC	HOME	D 1-1	Own goal	18	12,867
Tues. 13	Carlisle United	Away	L 1-2	Franks	18	9,484
Sat. 17	Cardiff City	Away	W 1-0	Woods	18	26,536
Sat. 24	OXFORD UNITED	HOME				
Wed. 28	SWINDON TOWN	HOME	W 2-1	Franks, Woods	17	10,211
May						
Sat. 1	Sheffield United	Away				

Football League Cup

Aug., 1970						
Wed. 19	PETERBOROUGH UTD.	HOME	W 2-0	Woods, Wigg		9,757
Sept.						
Tues. 8	Swindon Town	Away	L 2-4	Scullion, Wigg		13,271
Feb., 1971						
Sat. 27	Final					

F.A. Cup

Jan., 1971						
Sat. 2	READING	HOME	W 5-0	Endean 3, Eddy, Scullion		13,206
Sat. 23	Oxford United	Away	D 1-1	Wigg		17,843
Wed. 27	OXFORD UNITED	HOME	L 1-2	Wigg		19,200
Feb.						
Sat. 13	Round 5					
Mar.						
Sat. 6	Round 6					
Sat. 27	Semi-Final					
May						
Sat. 8	Final					

TONIGHT'S OFFICIALS

Mr. Lyden comes from Birmingham and started refereeing in 1954. His progress to the Football League line was via the Birmingham Works A.F.A. and the West Midlands Regional League in 1961. He became a Football League Referee in 1963. He has officiated in a Wales v. Scotland Youth International in 1963, the Amateur Cup Final last year and in the Anglo-Italian Tournament in 1970.

Mr. Lyden is a technical clerk, married, with two children and was elected President of Birmingham Boys' Football League in 1969.

Mr. Ling comes from Westcliff and started refereeing while in the R.A.F. in 1952 while in Germany. He progressed through Junior Football in the Birmingham, Blackpool and London area. He is now a referee on The Football Combination and The London Mid-Week Leagues.

He is a self-employed insurance broker, after 22 years in the R.A.F. He received all the major honours in the R.A.F., including refereeing the Senior Cup Final.

Mr. Drewitt comes from Haywoods Heath, in Sussex, and has been a match official for nine years, and four years ago he was appointed a referee on the Southern Football League. His appointment to the Football League line came two years ago, and he makes his first visit to Watford this evening.

LIST OF BALL DONORS

1970

15 8.70	BLACKBURN ROVERS	L. Goodall, Esq., Vice-President, Watford F.C.
19. 8.70	PETERBOROUGH UNITED	"Almaron"
29. 8.70	HULL CITY	Ten Pen Centers, from Tring
12. 9.70	CARLISLE UNITED	Green Shield Stamp Trading Co. of Watford
26. 9.70	SHEFFIELD UNITED	R. G. Phillips, Esq., of South Harrow
30. 9.70	NORWICH CITY	Mrs. S. A. Lepard of Harrow
10.10.70	CARDIFF CITY	Sports Club of Rolls-Royce Ltd.
24.10.70	BIRMINGHAM CITY	J. D. Morgan, Esq., Vice-President, W.F.C.
7.11.70	LEICESTER CITY	Godfrey Davis (St. Albans) Ltd.
28.11.70	BOLTON WANDERERS	Mr. and Mrs. R. W. Sampson
12.12.70	LUTON TOWN	George and Roberts Ltd., Printers
19.12.70	SUNDERLAND	Top Footwear for Men, of Watford

1971

2. 1.71	READING	F. Jones, Esq., of Hatch End
16. 1.71	MILLWALL	In memory of Dr. Bob
6. 2.71	SHEFFIELD WEDNESDAY	Garston TV and Radio Service
20. 2.71	ORIENT	Messrs. Clements (Watford) Ltd.
26. 2.71	MIDDLESBROUGH	H. Christopher, Esq.
13. 3.71	BRISTOL CITY	K. J. Walker, Esq.
27. 3.71	QUEEN'S PARK R.	Mrs. D. N. Broad, of Watford.
9. 4.71	PORTSMOUTH	E. E. Beaumont, Esq., Vice-President, W.F.C.
10. 4.71	CHARLTON ATHLETIC	Mrs. J. Bonser
24. 4.71	OXFORD UNITED	Anon.
28. 4.71	SWINDON TOWN	Litholite Mouldings Ltd., of Watford

You are looking for the best "ON THE FIELD"

—so only look for the best "OFF THE FIELD"

Prompt and free delivery of TIMBER, etc.

W. H. LAVERS & SONS LTD.

TIMBER AND BUILDING MATERIAL MERCHANTS
MERTON ROAD, WATFORD

Telephone 25292

and at 304 St. Albans Road

Also Hemel Hempstead and St. Albans

JOHN F. COLMAN

BESPOKE TAILOR

Wedding orders a speciality

Has now moved to larger premises

80 High Street, Watford

First Floor—over Ryman's Stationers

(opposite Cawdells Store)

Tel. Watford 25700

Specialists in
Made-to-Measure Clothes
High-grade Cloths—
Best and Latest Designs
And
Tailored Alterations and
Repairs
Dress-wear Hire
Valet Service

VALES PLANT REGISTER LIMITED

YOUR LOCAL PLANT HIRER

for all types of plant and equipment or for those
special erection, installation and dismantling jobs, consult the experts

Call, write or telephone: Tolpits Lane, Watford, Herts

Tel: Rickmansworth 76688, 77705 and 77907

LAST WEEK'S MATCHES

Thurs., April 22 South-East Counties League. Fulham (home). Lost 0-3.—Basri, Luck, Dean, Hayes, Jones, Talbot, Coley, Owen, Fuorvito, Thomas, Pritchard.

Sat., April 24 Football League. Oxford United (home). Won 2-1.—Walker, Butler, Williams, Franks, Eddy, Walley, Scullion, Garbett, Wigg, Welbourne, Woods. Scorers: Franks, Wigg.

SEASON TICKETS 1971-72

Please send me details of Season Tickets for 1971/72:

NAME

ADDRESS.....

Send completed form to the Secretary, Watford FC, Vicarage Road, Watford.

Existing ticket holders need not apply.

ROLL CALL, 1970-1971

(Up to and including 24th April, 1971)

League	Scorers	L.M.W.L.	L.M.W.L.C.	Scorers	S.E. Counties	Scorers	F.L. Cup	Scorers	F.A. Cup	Scorers
Allen	..	5	3							
Ayling	..			4						
Basri	..			19						
Brown	..			7	1					
Brownsell	..	2	1							
Butler	.. 23									
Clark	..			3						
Coley	..			3						
Crane	..			1						
Dale	..			5	1					
Dawson	..			5						
Dean	..			11						
Dee	..			3						
Dunn	..			1						
Eddy	.. 32 1	3	1	6		2		1		
Edmonds	.. 9	15	5							
Endean	.. 6 4	12	1	7		(1)		3	3	
Farley	.. 11	1	15	6	6					
Franks	.. 7 4	2	17	11	2					
Fuorvito	..		3		11	2				
Garbett	.. 37 2	1	1			2		3		
Griffiths	..			1						
Griggs	..			15	5					
Hale	..	3								
Hayes, Gary	..			18	2					
Hayes, Glen	..			1						
Hewish	..			4						
Hobbs	..									
Hyde	..			1						
Jennings	.. 8 1	2	13	8	12					
Johnson	..			4						
Jones	..			4						
Kelby	..			1						
Laynes	..			1						
Lees	.. 36	1	1			2		3		
Lewis	..	2								
Lowery	..	7	1	2						
Luck	..			4						
Lugg	.. 15 3	8	11	3		1		1		
Margerrison	..			12						
McGettigan	.. 1	4	10	6	5	3				
Merrifield	..		1							
Millett	..			3						
Obichere	..			4						
Owen	..	9	10	3	19	3				
Packer	.. 15 4	9	9	6				(2)		
Payne	..	3	2		22					
Pearce	.. 1	18	15							
Pegg	..			6						
Plackett	..			3						
Pritchard	..			12	4					
Randall	..	1								
Read	..			3						
Ridout	..			8						
Scullion	.. 28 5	3	5	2		2	1	3	1	
Sinclair	.. 18 1	1	12	3	2	1		1		
Sinnott	..			1						
Slater	..	2	2							
Stafford	..			9	1					
Talbot	..	6	12	14						
Theocharous	..		1							
Thomas	..	2		2	2					
Tibbles	..			5						
Van Hamme	..			1						
Walker, M.	.. 31	1	8			2		3		
Walker, R.	..	16	11	3	15					
Walley	.. 39	5				2		2		
Walsh	..		2		18					
Welbourne	.. 32 1	2	6	1	3	2		2		
White	..			7	3					
Wigg	.. 39	12				2	2	3	2	
Wilby	..			4						
Williams	.. 27		7	4		2		3		
Wilson	..		2		10	1				
Wise	..			3	1					
Woods	.. 27 1	3	2	9	1	2	1			
Yates	..			6						
Opponents	.. 1		1		1					

Substitutes in League are shown in bold figures.

LEAGUE TABLES, 1970-1971

LEAGUE DIVISION II

(Up to and including 26th April, 1971)

	P	W	D	L	F	A	W	D	L	F	A	Pts
Leicester	..	40	12	7	2	30	14	9	6	4	24	15 55
Sheffield Utd.	..	40	12	6	1	41	17	7	8	6	24	21 52
Cardiff	..	39	11	7	2	38	16	8	6	5	24	17 51
Carlisle	..	40	15	3	2	36	13	3	10	7	24	29 49
Hull	..	40	10	5	4	29	14	8	8	5	23	25 49
Luton*	..	39	11	6	2	36	17	6	6	8	21	23 46
Middlesbro.	..	40	13	5	2	37	16	4	7	9	22	26 46
Millwall	..	41	13	5	3	36	12	5	4	11	22	30 45
Birmingham	..	40	12	7	2	30	12	5	3	11	27	35 44
Norwich	..	41	11	8	2	34	20	4	6	10	20	31 44
Sunderland†	..	40	11	6	3	34	20	4	5	11	17	32 41
Q.P.R.	..	40	10	4	5	36	21	5	6	10	19	31 40
Swindon	..	40	12	7	2	38	14	2	4	13	20	35 39
Oxford	..	40	7	7	5	20	21	6	6	9	18	25 39
Sheff. Wed.†	..	41	10	7	4	32	27	2	5	13	19	39 36
Portsmouth	..	41	9	4	7	31	26	1	10	10	14	33 34
Orient*	..	41	5	11	5	16	15	4	5	11	13	35 34
WATFORD	..	40	6	7	7	17	20	4	6	10	20	35 33
Bristol City	..	40	9	6	5	30	27	1	4	15	14	34 30
Charlton	..	40	7	4	8	26	28	1	8	12	13	35 28
Blackburn	..	40	5	7	8	18	26	1	7	12	17	39 26
Bolton	..	41	6	5	10	22	31	1	4	15	12	42 23

* Promoted Teams

† Relegated Teams

S.E. COUNTIES LEAGUE

(Senior Section)

(Up to and including 24th April, 1971)

	P	W	D	L	F	A	Pts
Tottenham	..	29	23	5	1	93	28 51
Arsenal	..	28	20	4	4	74	20 44
Millwall	..	29	19	3	7	40	20 41
Chelsea	..	28	18	1	9	70	34 37
Ipswich Town	..	29	15	6	8	44	31 36
West Ham	..	30	14	5	11	52	45 33
Orient	..	29	11	8	10	46	39 30
Crystal Palace	..	29	11	8	10	50	47 30
Luton Town	..	30	11	5	14	60	57 27
Charlton	..	25	9	6	10	36	43 24
Gillingham	..	26	10	4	12	42	63 24
Q.P.R.	..	30	10	3	17	40	62 23
WATFORD	..	29	4	7	18	30	77 15
Reading	..	29	3	9	17	25	75 15
Fulham	..	29	6	2	21	37	60 14
Brentford	..	27	6	0	21	32	80 12

LONDON MID-WEEK LEAGUE CUP

(Up to and including 19th April, 1971)

	P	W	D	L	F	A	Pts
Luton Town	..	15	9	3	3	32	17 21
Millwall	..	14	9	2	3	33	19 20
Southend	..	13	7	5	1	20	8 19
WATFORD	..	14	7	4	3	24	13 18
Peterborough	..	17	5	4	8	20	23 14
Brighton & Hove Albion	..	14	4	5	5	16	26 13
Orient	..	14	4	3	7	14	22 11
Colchester	..	11	3	3	5	15	19 9
Charlton	..	12	2	4	6	10	19 8
Aldershot	..	14	0	5	9	13	31 5

RESERVE & JUNIOR FIXTURES, 1970-71

2nd Team—THE LONDON MID-WEEK LEAGUE

(LC) Denotes League Cup Fixture

Aug., 1970				F	A
Tues. 18	Orient ..	Away	1—1	295	
Wed. 26	Millwall ..	Away	1—5	285	
Sept.					
Wed. 2	Southend ..	Away	3—1	306	
Wed. 16	Peterborough ..	Home	1—2	1,056	
Tues. 22	Charlton ..	Away	2—2	278	
Wed. 30	Brighton ..	Away	1—1	792	
Oct.					
Wed. 7	Millwall ..	Home	6—0	925	
Wed. 14	Charlton ..	Home	1—0	1,164	
Wed. 21	Millwall (LC)	Away	1—3	127	
Wed. 28	Colchester ..	Home	3—1	1,084	
Nov.					
Tues. 3	Luton ..	Away	2—2	1,051	
Wed. 11	Southend ..	Home	2—1	1,109	
Wed. 18	Orient ..	Home	1—0	715	
Dec.					
Wed. 2	Brighton ..	Home	6—0	912	
Mon. 7	Peterborough ..	Away	0—0	848	
Wed. 16	Aldershot ..	Away	3—1	951	
Wed. 23	Luton ..	Home	3—1	1,054	
Jan., 1971					
Wed. 13	Colchester ..	Away	1—0	173	
Tues. 19	Luton (LC)	Away	4—1	858	
Feb.					
Tues. 2	Charlton (LC)	Away	4—0	187	
Wed. 10	Luton (LC)	Home	1—2	1,949	
Mon. 15	Aldershot ..	Home	2—1	1,814	
Wed. 17	Southend (LC)	Away	0—0	206	
Mon. 22	Peterborough (LC)	Away	1—2	590	
Mar.					
Wed. 3	Peterborough (LC)	Home	1—0	1,048	
Wed. 10	Colchester (LC)	Away	3—2	162	
Wed. 17	Millwall (LC)	Home	1—1	602	
Wed. 24	Brighton (LC)	Home	1—1	787	
Wed. 31	Charlton (LC)	Home	1—0	755	
April					
Wed. 7	Aldershot (LC)	Home	3—0	820	
Wed. 14	Aldershot (LC)	Away	2—0	1,002	
Mon. 19	Orient (LC)	Away	1—1	124	
Wed. 21	Southend (LC)	Home	1—2	751	
Fri. 30	Colchester (LC)	Home	
May					
Mon. 3	Orient (LC)	Home	
Wed. 5	Brighton (LC)	Away	

RECORD GATES

Record League Gate
27,968 v. Queens Park Rangers 1969/70.

Record Cup Gate
34,099 v. Manchester United 1968/69.

SOUTH-EAST COUNTIES LEAGUE

Senior Division

Aug., 1970				F	A
Sat. 15	West Ham United ..	Home	2—1		
Sat. 22	Tottenham Hotspur ..	Away	0—5		
Sat. 29	Luton Town ..	Home	2—4		
Sept.					
Sat. 5	Arsenal ..	Away	1—1		
Sat. 12	West Ham (LC)	Home	3—0		
Sat. 19	Orient ..	Away	1—2		
Sat. 26	Millwall ..	Home	0—2		
Oct.					
Sat. 3	Chelsea ..	Away	1—1		
Sat. 10	Crystal Palace ..	Home	2—2		
Sat. 17	Orient (LC)	Away	1—1		
Sat. 24	Queens Park Rangers ..	Home	0—4		
Sat. 31	Charlton Athletic ..	Away	1—2		
Nov.					
Sat. 7	Ipswich Town ..	Home	1—2		
Sat. 14	Luton Town ..	Away	3—3		
Sat. 21	West Ham United ..	Away	1—4		
Sat. 28	Tottenham Hotspur ..	Home	1—4		
Dec.					
Sat. 5	Queens Park Rangers ..	Away	1—2		
Sat. 12	Arsenal ..	Home	1—0		
Sat. 19	Orient ..	Home	0—7		
Jan., 1971					
Sat. 9	Ipswich Town ..	Away	0—5		
Sat. 16	Charlton Athletic ..	Home	1—3		
Sat. 30	Millwall ..	Away	0—4		
Feb.					
Sat. 13	Orient ..	Home	3—1		
Sat. 20	Reading ..	Away	2—2		
Sat. 27	Crystal Palace ..	Away	2—1		
Mar.					
Sat. 13	Chelsea ..	Home	0—6		
Sat. 27	Fulham ..	Away	0—4		
April					
Sat. 3	Brentford ..	Away	2—0		
Sat. 10	Reading ..	Home	2—2		
Sat. 17	Gillingham ..	Home	2—2		
Mon. 19	Gillingham ..	Away	0—3		
Thur. 22	Fulham ..	Home		
May					
Sat. 1	Brentford ..	Home		

Thomas McInerney & Sons Ltd.

*Building and
Civil Engineering Contractors*

McInerney House, The Green, Croxley Green,

Rickmansworth WD3 3HM

Telephone Rickmansworth 78111 (10 lines)

DOUBLE DIAMOND WORKS WONDERS!

Brewed by IND COOPE



PAYNE BROS. (LEAVESDEN) LTD.

235 Horseshoe Lane

Garston, Watford

WD2 7JE

Telephone Garston 72014

Building Contractors to:

Herts County Council

H.M. Government

British Railways

Private architects, etc

Est. 1904

THE HANDYMAN'S SHOP

P. BECKFORD LTD.

307 BALDWINS LANE

CROXLEY GREEN

Telephone Rickmansworth 75697

- Timber, Hardboard and Mouldings
- Ironmongery and Tools
- Domestic Hardware
- Garden Requisites
- Key Cutting
- Electrical Accessories
- Glass cut to size

Stockists of high-class Decorating Materials.

Agents for Crown, Sanderson, Continental and Shand Kydd Wallpapers

RODNEY GIBBONS LTD.

Multiple Wallpaper and Paint Specialists

Lighting Decor

LOCAL BRANCHES:

Stanmore, Edgware, Mill Hill, Wembley Central, South Harrow, North Harrow, Hendon, Brent, Colindale, Queensbury, Preston Park, Kingsbury.

FOLLOW KEN FURPHY . . .

AND SIGN ON WITH

WATFORD OBSERVER

WATFORD

Gold shirts, black shorts.

1. MIKE WALKER
2. DAVID BUTLER
3. JOHN WILLIAMS
4. COLIN FRANKS
5. KEITH EDDY
6. TOM WALLEY
7. STEWART SCULLION
8. TERRY GARBETT
9. RON WIGG
10. DUNCAN WELBOURNE
11. CHARLIE WOODS
- 12.

SWINDON TOWN

Red shirts, white shorts

1. PETER DOWNSBOROUGH
2. ROD THOMAS
3. JOHN TROLLOPE
4. JOE BUTLER
5. FRANK BURROWS
6. STAN HARLAND
7. STEVE PEPLOW
8. ROGER SMART
9. CHRIS JONES
10. PETER NOBLE
11. DON ROGERS
- 12.

Scorers

Referee:

D. J. LYDEN (Birmingham)

Result

Linesmen:

D. R. DREWITT (Haywards Heath)
(Orange flag)

Ball Donor:

LITHOLITE MOULDINGS LTD., of
Watford

D. A. LING (Westcliff)
(Red flag)

Last Season's Result 0-0

*Don't be late for the match—
get a watch from*

JACKSON
(from B. S. Morse)

"Watford's oldest jewellers
now in fourth generation"

24 HIGH STREET
WATFORD
WATFORD 32449